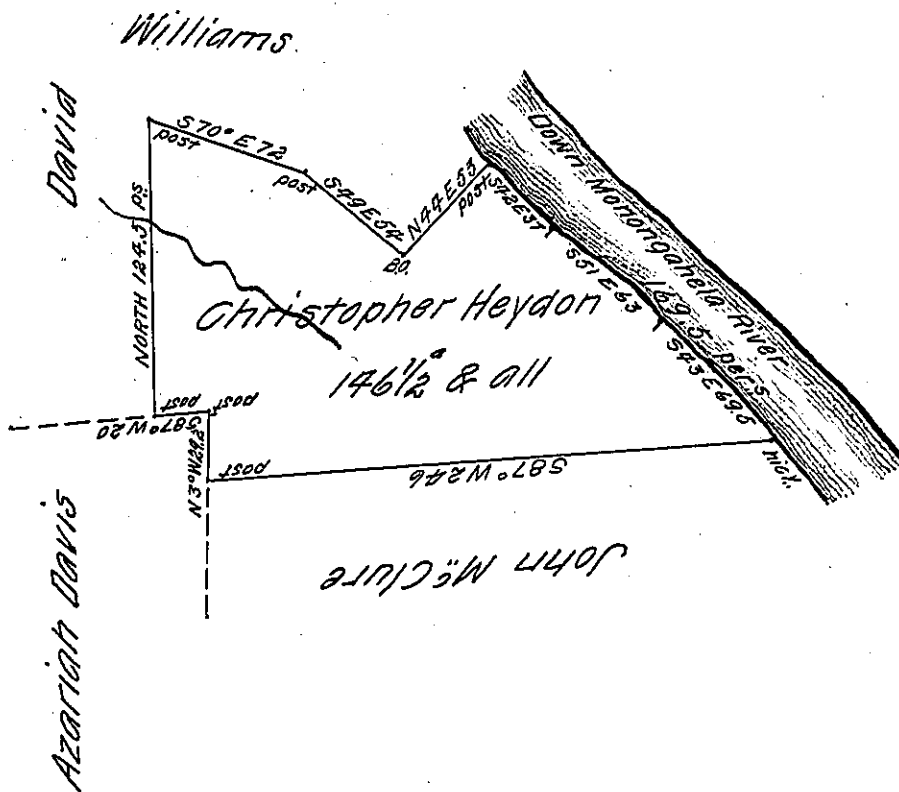


69.5
63.0
37.0

169.5



Situated on the East Side of Monongahela River in Rostraver Town-
-ship Westmoreland County & Surveyed the 28th Day of March 1787 in pursu-
-ance of a warrant Dated the 28th Day of February 1787.

To John Lukens Esquire
Surveyor General

P^r Alexander McGlean Depty.

IN TESTIMONY that the above is a copy of the original remaining on file in
the Department of Internal Affairs of Pennsylvania, made
conformably to an Act of Assembly approved the 16th day of
February, 1833, I have hereunto set my Hand and caused
the Seal of said Department to be affixed at Harrisburg,
this thirteenth day of March 1905

Alexander McGlean
Secretary of Internal Affairs.